

---

**INDOOR / DOWNLIGHTS DE  
SUPERFICIE / QUADRO / QUADRO  
DOWN**

**Código artículo 86.SD08.2303.01**

**LAVOV**  
L I G H T I N G



LED Ceiling light  
DOR/DOS

DOR450

DOR320

DOR260

DOR360

DOR300

DOS320

DOS260

DOS360

DOS300

IP54

Required Tools

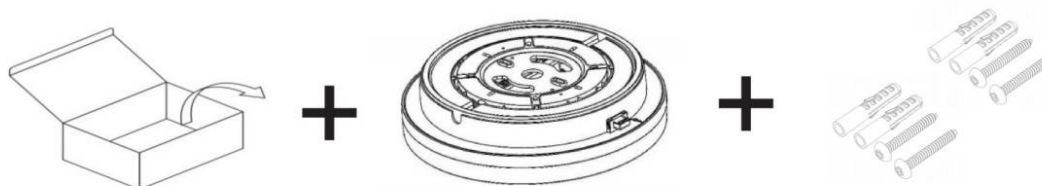
WARNING:

Check that the power is off before conducting any maintenance and assembly work

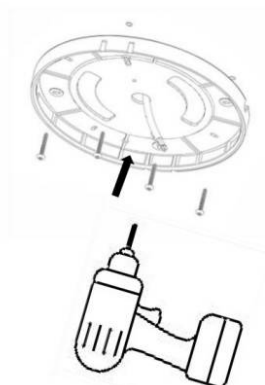
Caution,danger of electric shock

The installation and commissioning of the luminaire as well as any modification to the luminaire may only be performed by authorized personnel (qualified electrician).

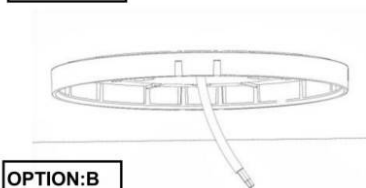
Step:1



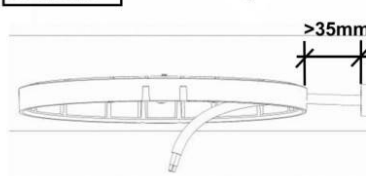
STEP:2



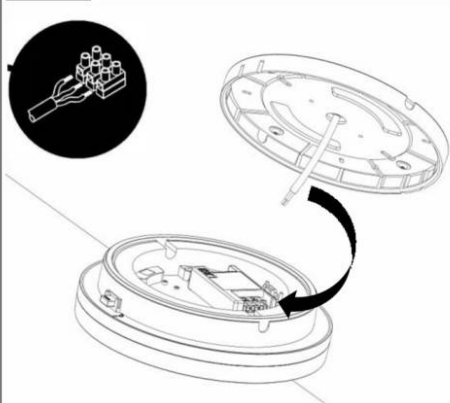
OPTION:A



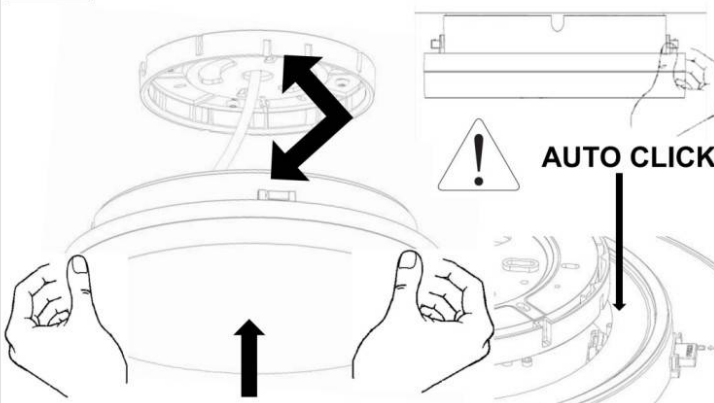
OPTION:B



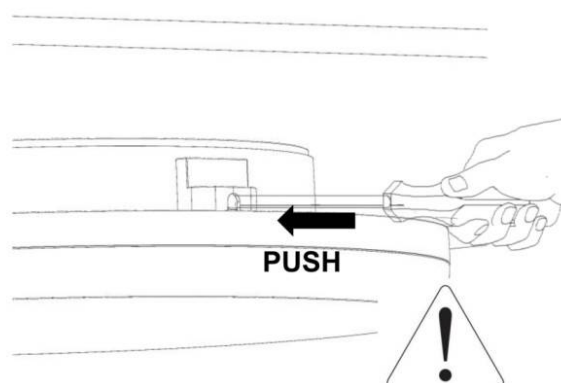
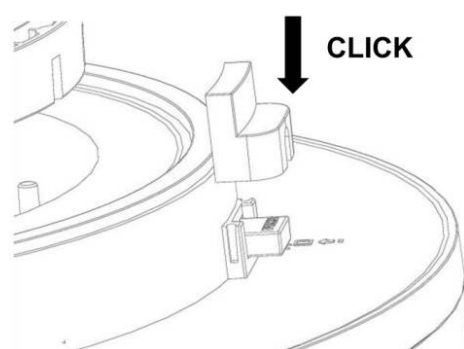
STEP:3



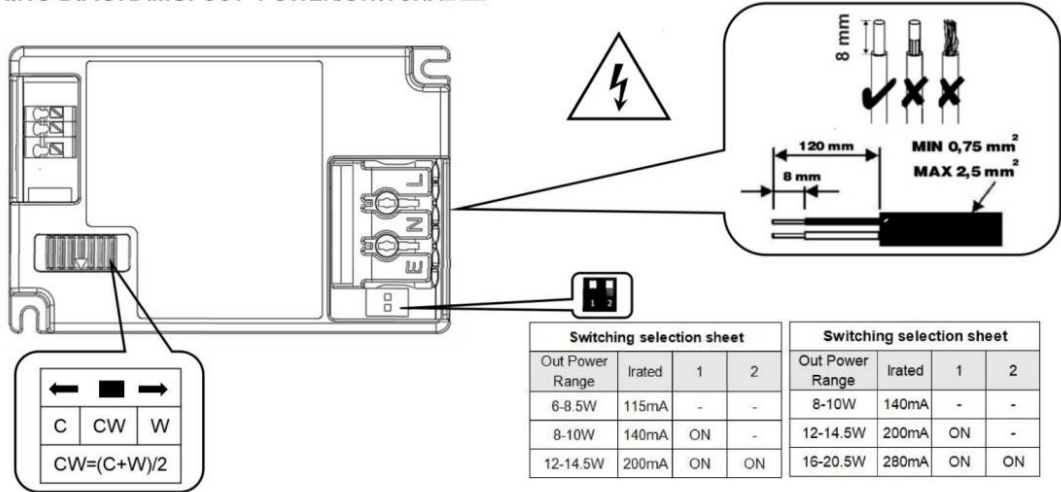
STEP:4



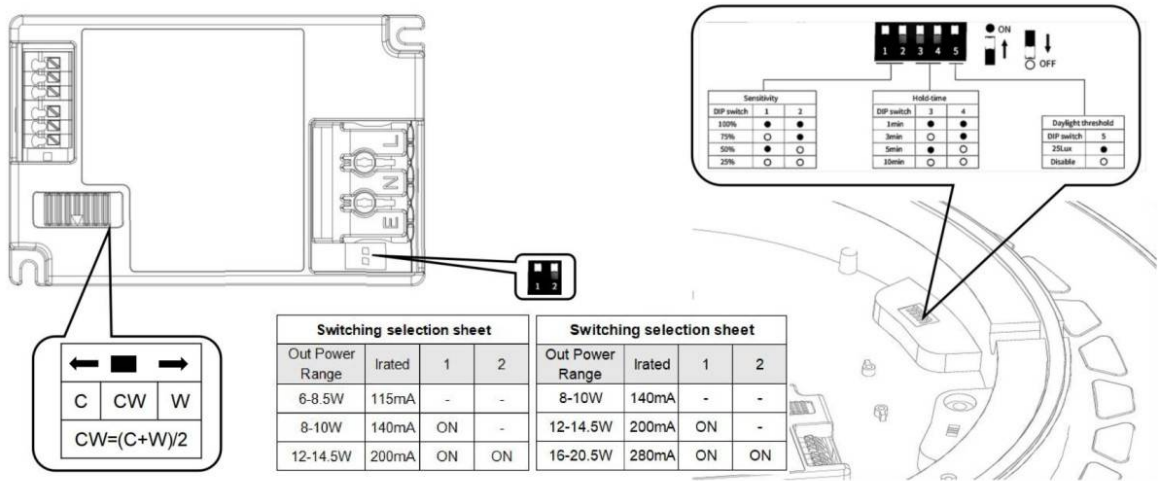
OPTION--SAFETY COVER



I. WIRING DIAGRAMS: CCT+POWER/SWITCHABLE



II. WIRING DIAGRAMS: CCT+POWER/SWITCHABLE+SENSOR/EM2



III. WIRING DIAGRAMS: CCT+DALI (TCI DT6)

